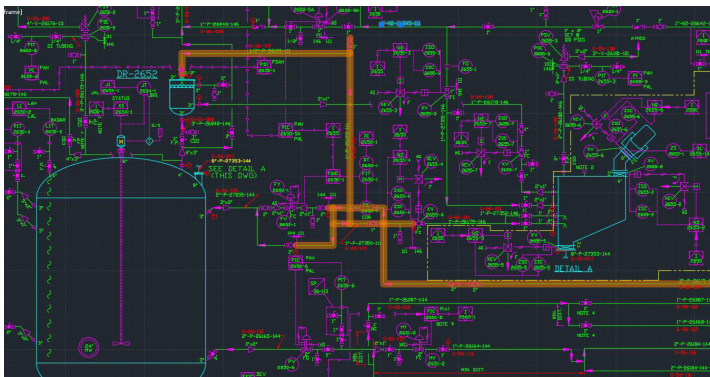




MECHANICAL INTEGRITY CASE STUDY

Engineering & Inspection Services (EIS) is a full service design and engineering firm established in 2000. EIS provides reliability engineering and design support, as well as project engineering services. Our primary expertise is on equipment upgrades and replacements. EIS offers onsite engineers, designers/drafters, inspectors, planners/schedulers, construction coordinators and estimators.



“EIS did a great job developing and completing the TML project. Marc is very knowledgeable in the MI field. I would like to use this project as the benchmark for completing other units in the plant.”

- Client Reliability Maintenance Superintendent



PROJECT TYPE

Mechanical Integrity Services
(On stream and CUI Implementation)



PROJECT DURATION

8 Months



OVERVIEW

A client was nearing completion of a newly constructed production unit at their facility. An established mechanical integrity/inspection program was in place at the plant. The client had identified 90 static assets and 825 lines that were classified as hazardous and/or needed to be included in their existing on stream and CUI programs. Based on our knowledge and expertise in these MI programs, the client selected EIS to complete the circuitization of these assets and related tasks. All services were performed at competitive pricing.



PROJECT SCOPE

- ▶ Circuitize 825 lines per client procedures.
- ▶ Develop a detailed circuit registry.
- ▶ Add circuits to 80 client P&IDs in .dwg format.
- ▶ Create CAD drawings for 90 static assets and 334 piping circuits.
- ▶ Assign CMLs to static assets and piping circuits per client procedures.
- ▶ Add new static assets and piping circuits to clients IDMS software.
 - Create files for new assets and piping circuits.
 - Build corrosion profiles for new assets and piping circuits.
 - Assign and schedule inspection tasks for new assets, piping circuits.



DELIVERABLES TO CLIENT

- ▶ 80 P&IDs with inspection circuits added in both .dwg and .pdf formats.
- ▶ CAD inspection drawings for 90 static assets and 334 piping circuits in both .dwg and .pdf formats.
- ▶ Detailed circuit registry in Excel format.
- ▶ Populated IDMS software ready for use.

CONTACT US:

3900 N Causeway Blvd., Suite 1350, Metairie, LA 70002
Office: (504) 837-3310 • Fax: (504) 837-3889 • www.eisllc.net